



Technical Bulletin

Bulletin #: V092514-03

Issue Date: September 25,
2014

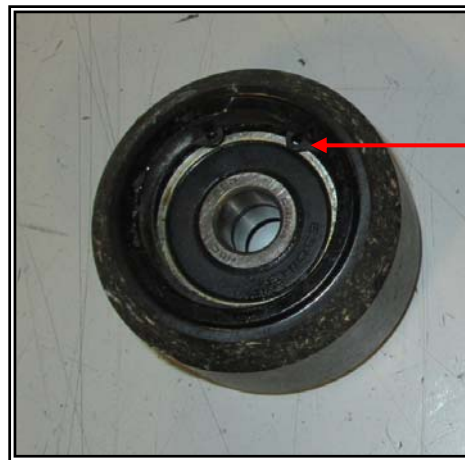
Installation of Turntable Rollers Procedure 429919 & 416055

When installing the turntable rollers for the LPA, LPD, or LPS, it is extremely important to install the roller in the correct orientation. If the roller is installed in the incorrect orientation, the roller will work its way towards the outside of the turntable and lock up, causing the roller to skid and wear in one location. To avoid this damage to the rollers, follow this procedure.

**Roller Side Toward the Center
of the Turntable**



**Roller Side Toward the
Outside of the Turntable**



Snap
Ring